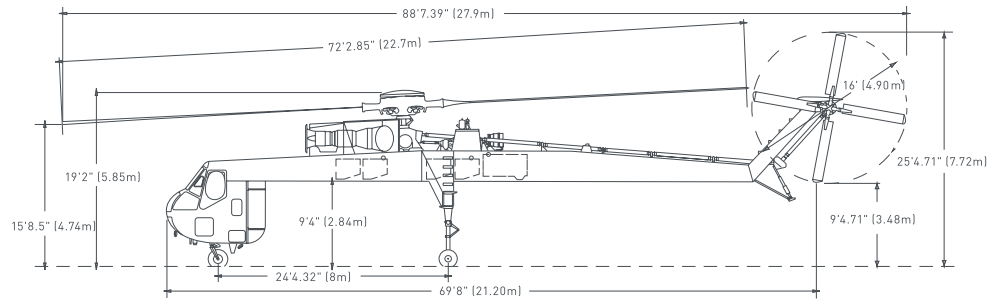
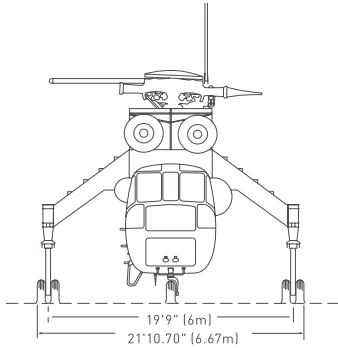




S-64 TECHNICAL AND PERFORMANCE INFORMATION

S-64F



POWER PLANT (2 ERICKSON JFTD12A-5A)

Maximum Power Available	9,600 SHP
Single Engine Limit	4,800 SHP / 30 min.

GENERAL

Maximum Gross Weight	47,000 lbs (21,320 kg)
Maximum Hook Weight	25,000 lbs (11,340 kg)
Maximum Cruise Speed	104 kts (192 km/hr)
Maximum Range	226 nm (20 minute reserve) 246 nm (no reserve)

FUSELAGE (NON-PRESSURIZED)

Length*	69 ft 8 in (21.20 m)
Width*	7 ft 1 in (2.13 m)
Width Landing Gear	21 ft 10.70 in (6.67 m)

*Fuselage only, External Dimensions

MAIN ROTOR

Main Rotor Diameter	72 ft 2.85 in (22.7 m)
Disc Area	4,098.2 sq. ft (380.7 sq. m)

TAIL ROTOR

Tail Rotor Dimension	16 ft (4.90 m)
Disc Area	201.1 sq. ft (18.7 sq. m)

LANDING GEAR

Main Gear	Wheeled
Nose Gear	Wheeled
Wheel Base	24 ft 4.32 in (7.43 m)

AIRCRAFT EQUIPMENT – CONFIGURATION ITEMS

AVIONICS

- Glass Cockpit
- Global Positioning Satellite (GPS)
- Automated Flight Tracking System (with mission-specific data)
- Satellite Phone capable
- Emergency Locator Transmitter (406MHz - 5 Axis)
- VHF Radio Packages (Dual)
- VHF FM Radio Packages (Dual)
- ADS-B System (In & Out)
- SATCOM Antenna
- Radar Altimeter
- Max-Viz (Enhanced Vision system)

MISSION-SPECIFIC EQUIPMENT

- Fire Tank
- Sea Snorkel (optional)
- Pond Snorkel
- Anti-Rotation Device
- Shock and Pendant
- Cargo Pod (Fly Away Box)

ERICKSONINC.COM

+1 503.505.5800

5550 S Macadam Avenue, Suite 200 | Portland, OR 97239, USA

ERICKSON

